



CATERING EVENT SPACE



LOS ANGELES ATHLETIC CLUB



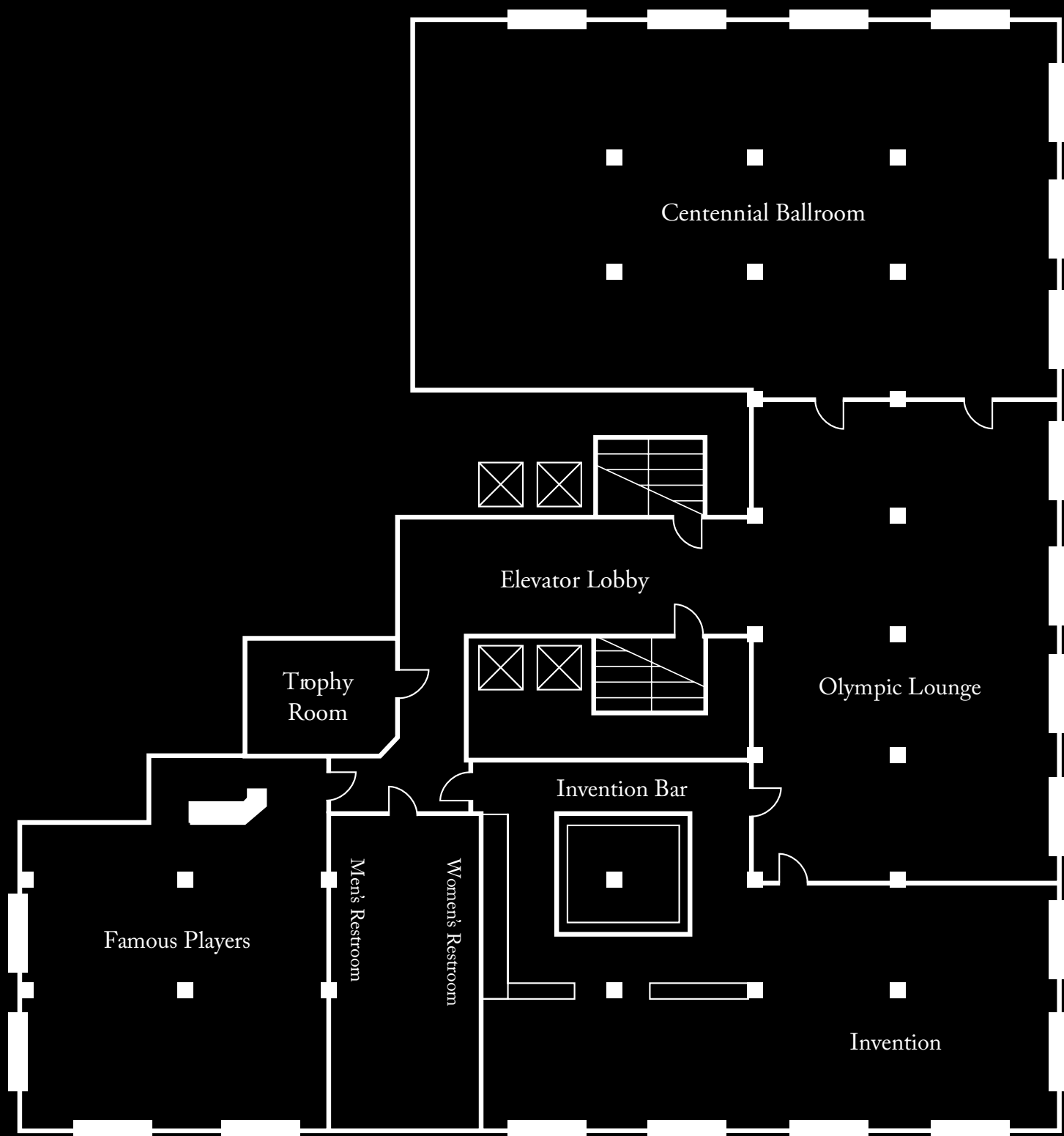
...BECOME A PART OF HISTORY AT THE LOS ANGELES ATHLETIC CLUB...

Rich in tradition and luxury, the club has the sophistication of a historic venue and modern accommodations of an urban haven. The LAAC was founded in 1880 as Los Angeles' first private urban country club, and was home to many of Early Hollywood's social elite. The LAAC offers traditional elegance for your social event with magnificent period furnishings, rich colors, beautiful decorations and adornments from its fine art collection.



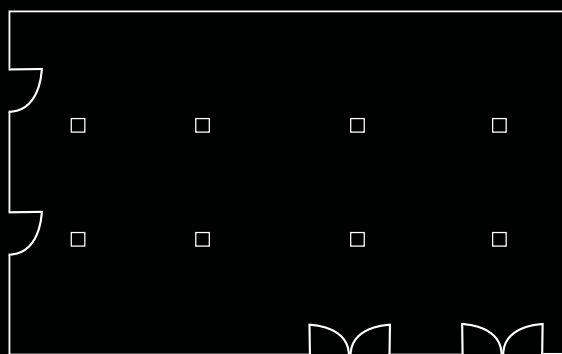
3RD FLOOR FLOOR PLAN

The heart of LAAC's social scene where old Hollywood glamour meets a downtown cosmopolitan edge. Offering everything from vintage books to crystal chandeliers, two story ceilings with old world mahogany, and an Olympic Torch from the 1984 Olympics. A place to come and exchange ideas and create lifelong relationships.





CENTENNIAL BALLROOM



Capacity :

Conference | 50
Crescent Rounds | 160
Hollow Squares | 50
Rounds | 300
Reception | 300
School Room | 130
Theatre | 250
U - Shape | 50

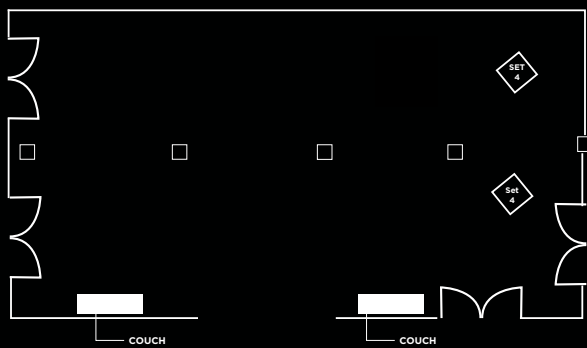
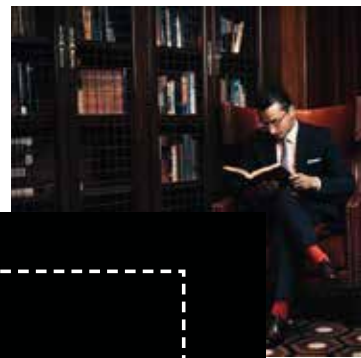
Dimensions :

Sq. Ft. - 4,250
Ceiling Height - 22'
Size - 85' x 50'



OLYMPIC LOUNGE

OLYMPIC LOUNGE



Capacity :

Conference | 40
Crescent Rounds | 48
Hollow Squares | 50
Rounds | 100
Reception | 150
School Room | 60
Theatre | 200
U - Shape | 40

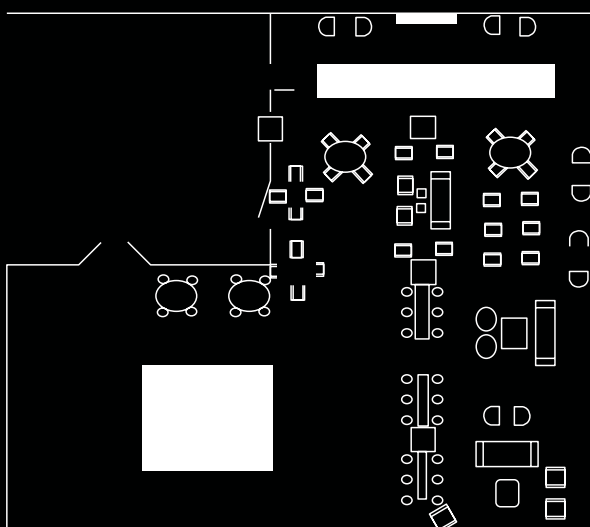
Dimensions :

Sq. Ft. - 2,640
Ceiling Height - 11'6"
Size - 66' x 40'





INVENTION



Capacity :

Existing Seating | 95
Reception | 125

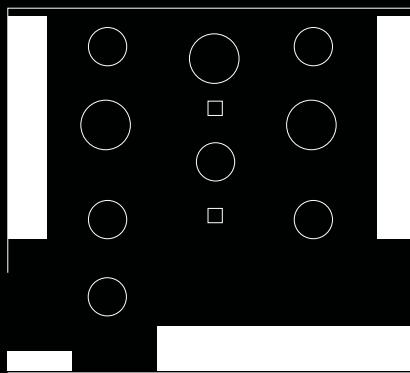
Dimensions :

Sq. Ft. - 3,552
Ceiling Height - 11' 6"
Size - 74' x 48'





FAMOUS PLAYERS

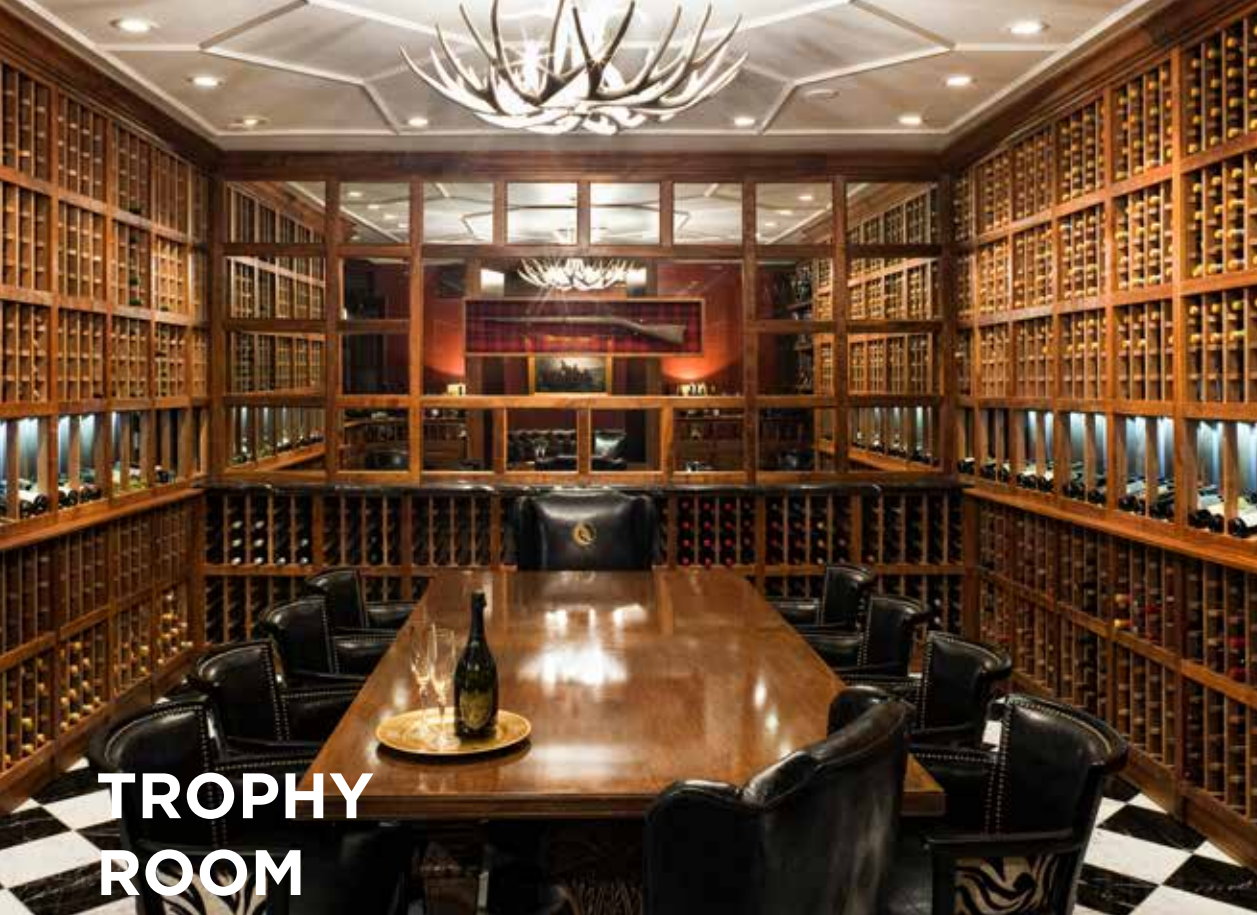


ENTRANCE

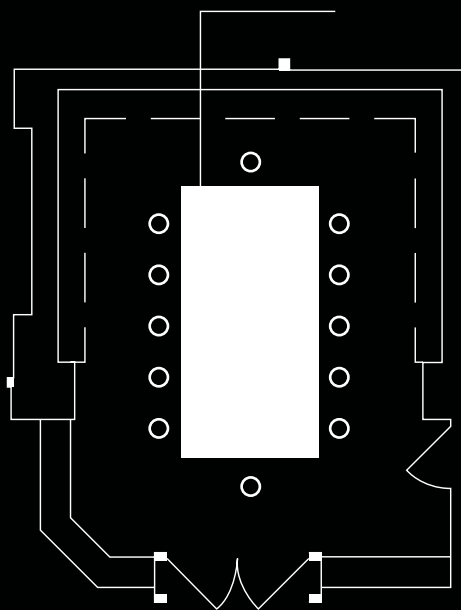
Capacity :
Existing Seating | 70

Dimensions :
Sq. Ft. - 1,640
Ceiling Height - 10'
Size - 41' x 40'





TROPHY ROOM



Capacity :

Existing Seating | 12

Dimensions :

Sq. Ft. - 221

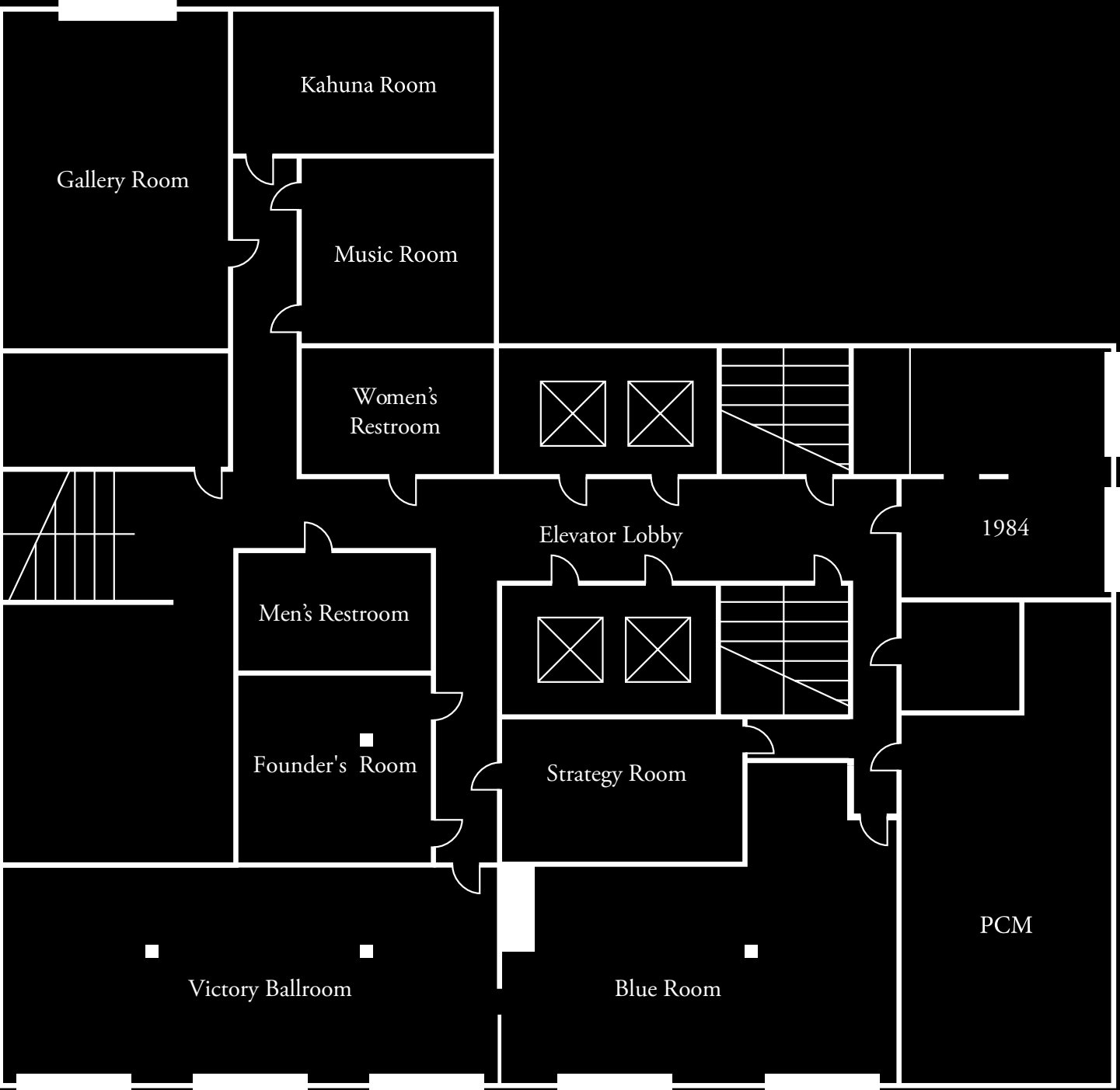
Ceiling Height - 9' 1"

Size - 13' 4" x 17' 6"



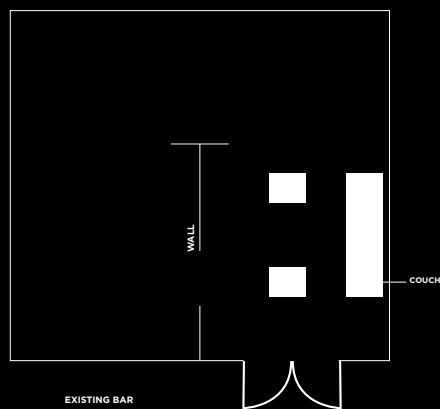
4TH FLOOR FLOOR PLAN

Our newly renovated fourth floor where every room is a surprise. Unique spaces perfect for your VIP Meeting, intimate Wedding Ceremony, sophisticated private dinner experience, or your own modern day speakeasy.





1984



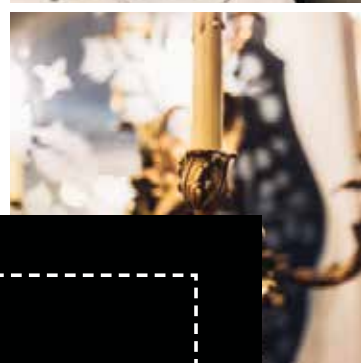
Capacity :

Conference | 26
Crescent Rounds | 18
Hollow Squares | 20
Rounds | 40
Reception | 60
School Room | 30
Theatre | 40
U - Shape | 22

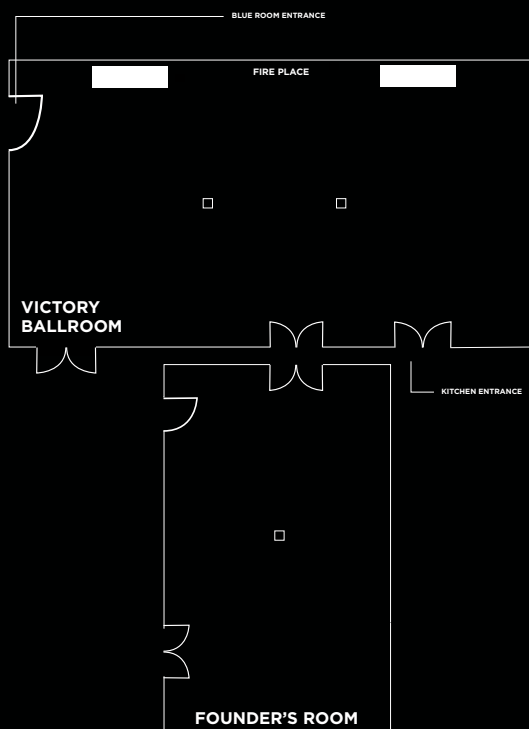
Dimensions :

Sq. Ft. - 1,254
Ceiling Height - 8' 9"
Size - 38' x 33'





VICTORY BALLROOM



Capacity :

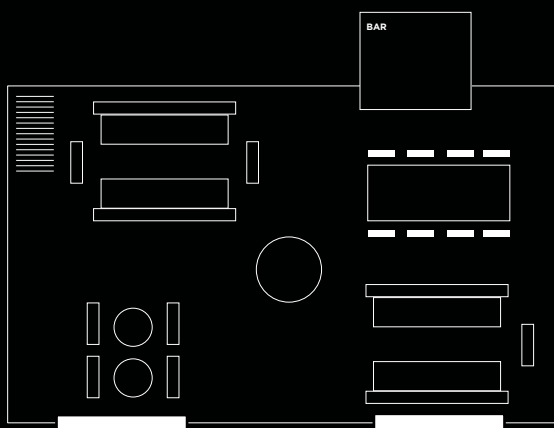
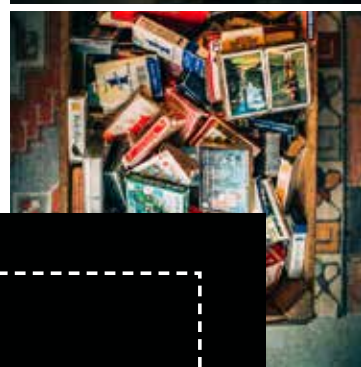
Conference | 40
Crescent Rounds | 80
Hollow Squares | 40
Rounds | 100
Reception | 100
School Room | 75
Theatre | 70
U - Shape | 32

Dimensions :

Sq. Ft. - 1,800
Ceiling Height - 10' 6"
Size - 60' x 32'



BLUE ROOM



Capacity :

Existing Lounge Furniture
Conference | 16

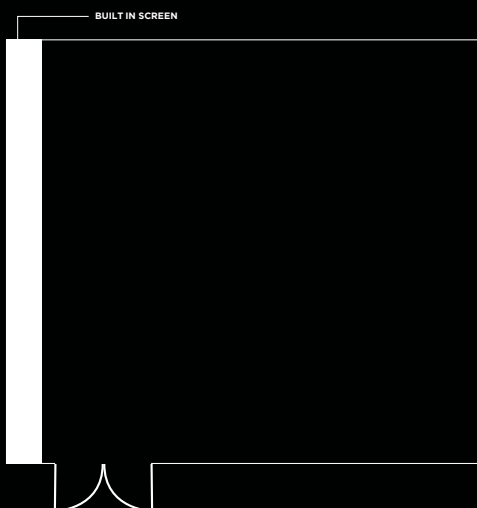
Dimensions :

Sq. Ft. - 986
Ceiling Height - 8'9"
Size - 29' x 34'





GALLERY ROOM



Capacity :

Conference | 26
Crescent Rounds | 24
Hollow Squares | 24
Rounds | 40
Reception | 50
School Room | 36
Theatre | 40
U - Shape | 22

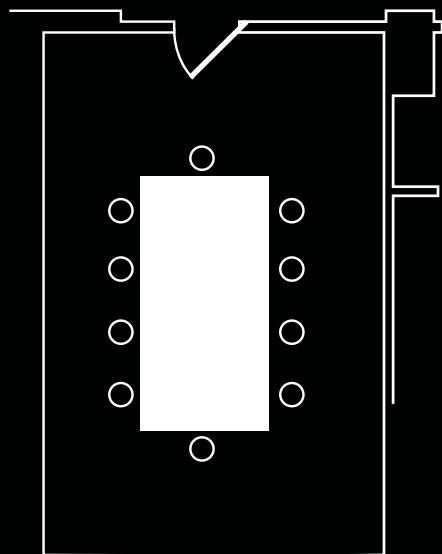
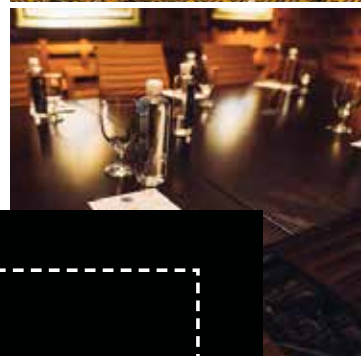
Dimensions :

Sq. Ft. - 864
Ceiling Height - 10'
Size - 36' x 24'





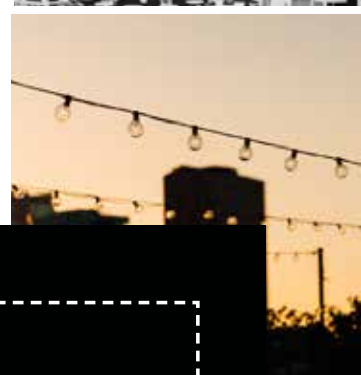
STRATEGY ROOM



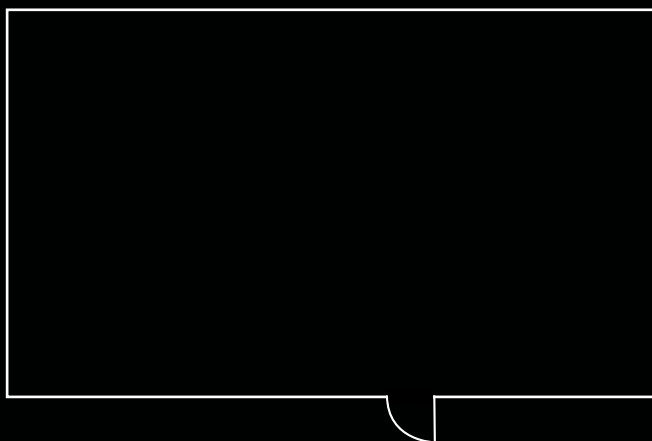
Capacity :
Conference | 12

Dimensions :
Sq. Ft. - 360
Ceiling Height - 7' 9"
Size - 24' x 15'





ROOFTOP



Capacity :
Event | 130

Dimensions :
Sq. Ft. - 4,160
Size - 130' x 32'

